



# SKID STEER LOADER

Supported by TOP Brand Hydraulic



#### RANGE

ZC350 / ZC450G / ZC600G / ZC650G / ZC750 / ZC1000B

Operating weight: 2,300 - 3,550 kg

Gross rated power: 37 - 74 Kw(50 - 100 HP)

[www.zenvan.cc](http://www.zenvan.cc)





**WE BUILD WHAT YOUR  
SITES NEED.**





All construction projects have one thing in common: they require loadbearing subsoil. Which is why skid steer loader play a crucial part in the construction process. Specifications, however, are highly diverse. A contractor working next to a listed house has to use an entirely different compaction method to that used in conventional earthmoving construction. ZENVAN offers a wide range of skid steer loader for every type of work. Our model range means contractors have the right tools for every construction site. For years, ZENVAN design engineers have made the best even better with every new generation.



## IMPRESSIVE IN HIGH PERFORMANCE

### Hight effective performance

- TOP brand hydraulics means excellent quality
- Easier operation with Joystick



### TOP reliable engine and motor

- All series were supported by TOP popular engine
- Adopt import World famous hydraulic components like SAUER, REXROTH
- Full hydraulic





### Excellent visibility

- Wide round glass surfaces
- Sloped and narrow engine bonnet
- Upper front window for full visibility
- Total control of the surrounding area

### Comfortable safety cabin

- ROPS & FOPS design cabin
- Anti-UV design protect your health well
- Radio, Air conditioner(option) help you finish work easily

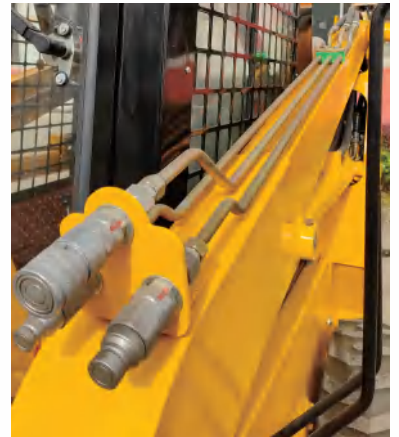
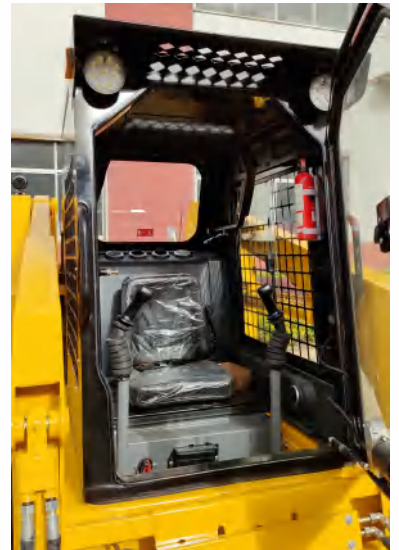
### Easy maintenance

- Easy retilling from ground level for hydraulic oil and fuel
- Centrd pressure measurement joint,easy for dially inspection
- Easy and fast maintenances for lubricating points

# Premium Performance

## OPERATION SAFETY AND CONTROL COMFORT

- 1 The large view luxury cab with air conditioner(option) system features large space, good sound and heat insulation, and good shock absorption. With openable side windows and rear window, the cab realizes broader visual field and comfortable operations.
- 2 The cabin protection is well equipped for ZENVAN skid steer loader.
- 3 The ROPS&FOPS cab and the seat belt, bumper, fire extinguisher, and safety hammer equipped guarantee the personal safety of the operator.
- 4 The emergency RED button equipped guarantee the personal safety of the operator.
- 5 The joysticks and the instrument panel are arranged in accordance with ergonomic principles so that the driver can always maintain the best comfort to make operations easier.
- 6 Strong and reliable hydraulic system pipeline easily installed on the driver's both sides, can work with so many different attachments to make the work easier. Reverse Camera are installed on the back can helps operator work more safe.





## HIGH-END CONFIGURATION FOR HIGH FIRMNESS AND RELIABILITY

### TOP ENGINE TO GET MAXIMUM RETURN ON INVESTMENT.

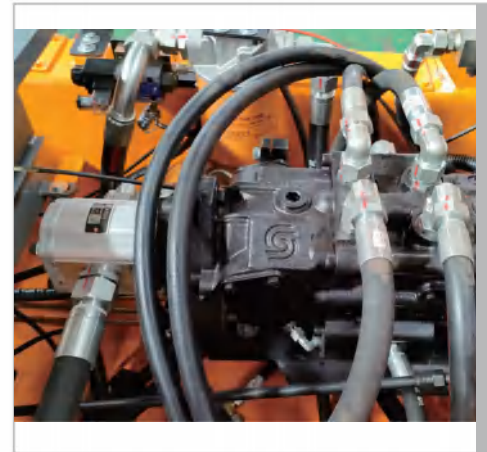
- 7 All series standard equipped with Chinese TOP brand engine, water-cooled, turbocharged with big power reservation, low oil consumption, small noises.
- 8 We provide optional engine like **YANMAR, CUMMINS** for your different choice.

Meantime, National II and III stage emission standard engine can be your different options according to different Country and Area requirements.



### DANFOSS HYDRAULICS KEEP THE COMPACTORS HIGH RELIABILITY

- 9 Adopt imported closed hydraulic drive system composed of variable displacement pump and motor to ensure better drive performance and gradeability.
- 10 ZENVAN skid steer loader equipped TOP brand **DANFOSS, BP, REXROTH, EATON** hydraulic pumps and motors always be with you together to make sure our skid steer loader high reliability and performance.



## SERVICEABILITY

WE'VE MADE SURE THE COMPACTORS WILL PROVIDE MAXIMUM UPTIME BY VIRTUE OF BEING INCREDIBLY EASY TO SERVICE. ROUTINE MAINTENANCE IS STRAIGHTFOR-WARD, DAILY CHECKS COULDN'T BE SIMPLER, AND THERE'S PLENTY OF GROUND-LEVEL ACCESSIBILITY.

- 1 All of the skid steer loader daily checks and routine servicing can be done from one side of the machine. Important service items are grouped for improved access and productivity.
- 2 The hood is a one-piece unit, and opens easily without having to remove extra panels.
- 3 Greasing and refuelling can both be done from ground level, making them easy and safe tasks to carry out on a compactor.
- 4 We've made the battery on this skid steer loader very easy-to-access and replace.
- 5 Easy found pressure check point will help you well know the hydraulic system.

### SERVICE INTERVALS



Engine oil	Every 500 hours
Engine oil filter	Every 500 hours
Hydraulic oil	Every 2000 hours
Hydraulic oil filter	Every 500 hours
Transmission oil	Every 500 hours
Transmission filter	Every 500 hours
Axle oil	Every 1000 hours









## SKID STEER LOADER ATTACHMENTS

4 in 1 bucket



Pallet fork



Dozer blade



Snow blade



Grapple bucket



Fork grapple



Backhoe



Backhoe arm



Sweeper



Angle Broom



Breaker



Planer



Trencher



Auger



Vibratory roller



Disk type trencher



Mixer



Snow Blower





Grass cutter



Rock bucket



Bale handler



Utility fork



Tree spade



Scraper



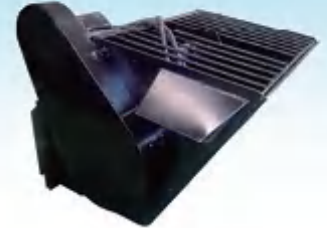
Drum Scraper



Rock grapple bucket



Bucket mixer



Multi-direction grass cutter



Roto tiller



Tire chain



Hedge trimmer



standard bucket



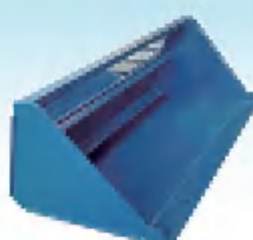
Soft clamp



Road Cutting Saw



Snow Bucket



Snow V-Blade





Wood Chipper



Soil Conditioner



Stump Bucket



Landscape Rake



Dozer Blade



Snow Pusher



Digger



Stump Grinder



Heavy Grass Fork Grapple



Forest Mulcher



Land Plane



Tree Puller



Side Shift Pallet Fork



Grader



Tilt-Tatch



Crane



Brush Cutter



Guardrail Cleaner



# TECHNICAL SPECIFICATION

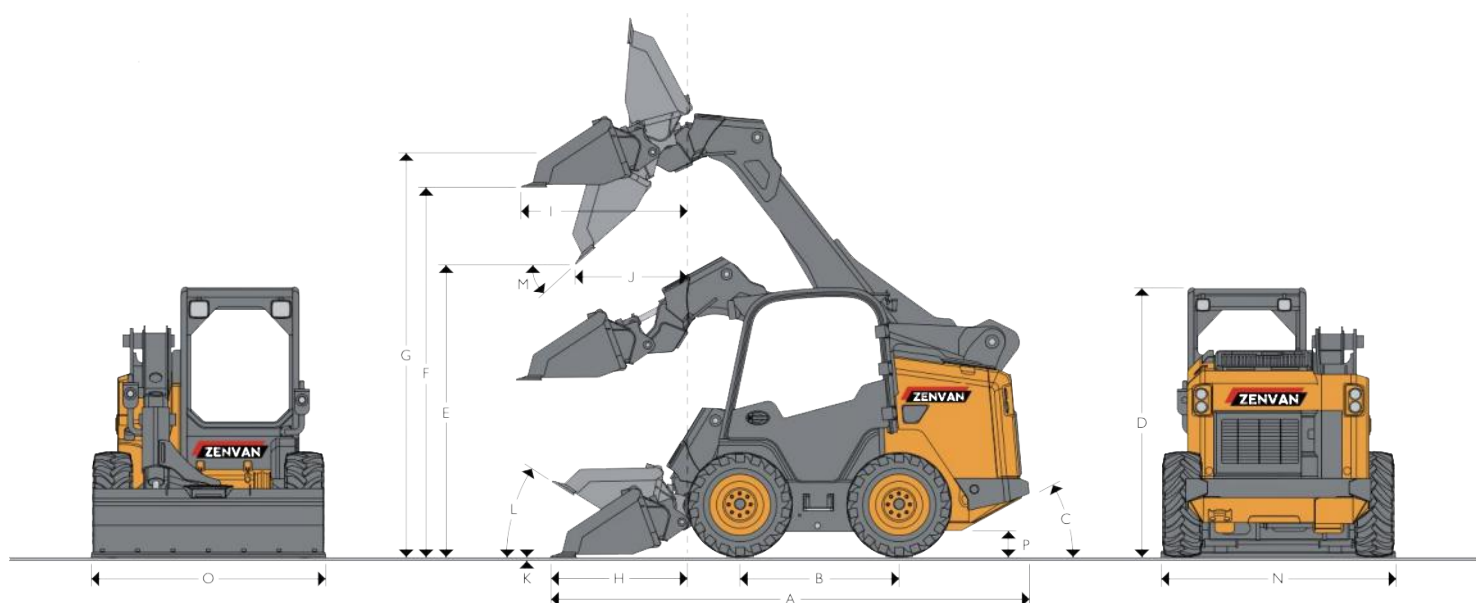
Model		ZC350	ZC450G	ZC600G	ZC650G	ZC750B	ZC1000B
Operating loading	kg	500	700	850	950	1050	1200
Self weight with standard bucket	kg	2300	3000	3200	3300	3500	3550
Transmission							
A full hydraulic controlled hydrostatic transmission giving zero to maximum speed, both forward and reverse at full power. Hydraulic power management system maintains full engine power availability maximizing loader and attachment control.							
Max Speed	km/h	10	12	12	12	12	12/18
Hydraulics							
In addition to the main hydrostatic drive pumps, there is a dedicated service pump for the loader and attachments (auxiliary hydraulics circuit standard flow on some models).							
Standard flow	L/min	60	75	75	80	80	80
Optional auxiliary high flow	L/min	/	/	/	/	120	140
Engine							
Manufacturer-standard		XINCHAI	XINCHAI	XINCHAI	XINCHAI	XINCHAI	WEICHAI
Engine model		490	490	498	498T	498T	WP4.1G100E311
Displacement	L	2.67	2.67	3.168	3.168	3.168	4.1
Fuel		diesel	diesel	diesel	diesel	diesel	diesel
Cooling		Water-cooling					
Aspiration		NA	NA	NA	turbocharge	turbocharge	Turbocharged
Rated power	Kw	36.8	36.8	45	55	55	74
Rated power	Hp	50	50	61	75	75	100
Rated speed	rpm	2650	2650	2500	2450	2450	2200
Emission certification		National II	National II	National II	National II	National II	National III
No. of cylinder		4	4	4	4	4	4
No. of stock		4	4	4	4	4	4
Bore	mm	95	95	98	98	98	105
Stroke	mm	105	105	105	105	105	118
Max. torque	N.m	156	156	193	245	245	395
Tire(Track) model		8.5-15	10-16.5	12-16.5	12-16.5	12-16.5	12-16.5
Fuel tank capacity	L	60	60	60	75	75	90
Std Bucket capacity (m <sup>3</sup> )	m <sup>3</sup>	0.3	0.4	0.5	0.5	0.5	0.55

# MAIN CONFIGURATION

Model	ZC350	ZC450G	ZC600G	ZC650G	ZC750B	ZC1000B
Main Pump	Italy BP/Hansha	SAUER / REXROTH / EATON	SAUER / REXROTH / EATON	GERMANY REXROTH	GERMANY REXROTH	GERMANY REXROTH
Motor	USA DANFOSS	USA EATON	USA EATON	REXROTH	GERMANY REXROTH	GERMANY REXROTH
Multi-way valve	Italy	ZHONEMEI	ZHONEMEI	ZHONEMEI / Italy	N/A	N/A
Hydraulic pilot valve	N/A	N/A	N/A	N/A	Italy EATON	Italy EATON
Std-Cabin	Closed	Open	Open	Closed	Closed	Closed
Std-operating	Hydraulic	Manual	Manual	Hydraulic	Hydraulic	Hydraulic
Std-Bucket	55"	68"	74"	74"	74"	80"
Brake	Hydraulic	Hydraulic	Hydraulic	Hydraulic	Hydraulic	Hydraulic
Quick coupling brand	FAST	FAST	FAST	FAST	FAST	FAST
Gear Pump	Std flow	Std flow	Std flow	Std flow	Large flow	Large flow



# DIMENSION



Model		ZC350	ZC450G	ZC600G	ZC650G	ZC750B	ZC1000B
A	Overall length with bucket	mm	3080	3420	3490	3490	3580
	-Overall length without bucket	mm	2300	2640	2750	2750	2880
B	Wheelbase	mm	897	991	991	1085	1185
C	Angle of departure	degrees	20	20	20	20	20
D	Overall height	mm	2000	2140	2160	2160	2160
E	Dump height	mm	2050	2380	2400	2400	2450
F	Loadover height	mm	2558	2913	2933	2933	2983
G	Pin height	mm	2725	3080	3100	3100	3150
H	Reach @ ground level	mm	780	780	740	740	700
I	Dump reach	mm	790	710	750	750	700
J	Reach @ full height - fully dumped	mm	1020	916	968	968	903
K	Dig depth clearance	mm	-10	-10	-10	-10	-10
L	Rollback @ ground	degrees	30	30	30	30	30
M	Dump angle	degrees	40	40	40	40	40
N	Width over tires - standard	mm	1350	1720	1880	1880	1880
O	Bucket width - standard	mm	1400	1740	1880	1880	1880
P	Ground clearance	mm	140	185	205	205	205
	Overall operating height	mm	3300	3980	4000	4070	4070
	Rear axle to bumper	mm	964	1108	1208	1082	1082
	Tread width - standard	mm	1080	1450	1500	1500	1500
	Rollback of bucket at full height	degrees	104	104	104	104	104
Turning radius							
	Quick hitch radius	mm	1098	1168	1198	1204	1250
	Front tuning radius	mm	1760	1958	1958	2030	2112
	Rear tuning radius	mm	1296	1630	1728	1706	1774

## OPTIONAL

Model	ZC350	ZC450G	ZC600G	ZC650G	ZC750B	ZC1000B
Manufacture 1	XINCHAI	XINCHAI	XINCHAI	XINCHAI	XINCHAI	DF CUMMINS
Emission Std	National III	National III	National III	National III	National III	National II
Manufacture 2	/	/	YANMAR	YANMAR	YANMAR	FZ CUMMINS
Emission Std	/	/	National II	National II	National III	National Ili
Air Condition	/	/	●	●	●	●
Closed cabin	/	●	●	◎	◎	◎

● means Optional

◎ means Standard

/ means can not make choice

## MEMO



# GLOBAL MARKET



Because is continually improving its products, specifications are subject to change without notice.

Notice: Not all products and product features are available in all countries in which this literature is published.

Go to [zenvan.cc](http://zenvan.cc) and view our safety section to learn more.



## ZENVAN EQUIPMENT CO., LTD

Fuxing city, Haikou city, China

Web: [www.zenvan.cc](http://www.zenvan.cc)

Facebook: [@zenvangroup](https://www.facebook.com/zenvangroup)

Scan the QR code and follow the official Media.



FACEBOOK